

PENNIES FROM HEAVEN

Orch. by
HARRY NEW

by JOH.
ARTHUR JOHNSTON

PIANO CONDUCTOR & ACCORDION GUIDE

Moderato

Brass

mf

C Dm7 Dm6 C Cdim Dm7 G(b9) C For C6 Gdim Dm7 G7

VOCAL CHORUS

mf-f

ev-'ry time it rains, it rains pen-nies from Hea - ven. — Don't you know each

C Cdim Dm7 G7 Dm7 G7 C

cloud con-tains pennies from Hea - ven? — You'll find your for-tune fall-ing

Cdim Dm7 G7 Dm7 G7 C7 C9 Gm7 C7

All o - ver town. Be sure that your ura-brel-la is up - side

F C9+ A7 D7 Am7 D7 G7 Dm7

Copyright MCMXXXVI, by Select Music Publications Inc. New York.
Campbell, Connelly & Co. Ltd., 10, Denmark St. London W.C.2.

International Copyright Secured
All Rights Reserved

A PIANO CONDUCTOR & ACCORDION GUIDE

down. Trade them for a pack-age of Sunshine and flow-ers.

G7 G+ G7 C Cdim D7 G7 Dm G7

If you want the things you love, You must have show-ers. So when you

C (47) Gm6 C7+ F Dm7

hear it thun-der, Dont run un-der a tree, Therell be pennies from Heaven, For you and

F(47) Fm Fm7 C(47) C9 B9 B9 A9 A7 Dm Dm7 D7 G5 G7

1 2 me.

C Cdim Dm7 G7 B9 C F7 Bb9 Eb7 B Ab (47) Ab Abdim Bbm7 Eb7

Sax

Ebm7 Eb7 B9 Ab Ab7 Ab7+ Db Bbm7 Db(47) Dbm Dbm7

Brass

Cm7 Ab9 G9 Gb9 F9 Bbm7 Eb7(-9) Ab6 A9 Ab9

PENNIES FROM HEAVEN

Orch. by
HARRY NEW

by JOHN BURKE &
ARTHUR JOHNSTON

2

1st SAX Eb ALTO

Moderato

Musical notation for the 1st Sax Eb Alto part. The score is written on a single staff in treble clef with a key signature of two sharps (F# and C#). The tempo is marked *Moderato* and the dynamic is *mf*. The music consists of a series of eighth and sixteenth notes, some beamed together, with various articulations and slurs.

VOCAL CHORUS

Musical notation for the Vocal Chorus part. It is written on two staves (treble and bass clefs) with a grand staff bracket. The dynamic is *mp*. The word "SOLI" is written above the treble staff. The music features a mix of quarter and eighth notes with slurs and ties.

Musical notation for the Vocal Chorus part, continuing from the previous system. The dynamic is *mf*. The notation includes various note values and slurs across both staves.

Musical notation for the Vocal Chorus part, continuing from the previous system. The dynamic is *mf*. The notation includes various note values and slurs across both staves.

1st SAX E \flat ALTO

A SOLI

f

mp

Detailed description: This system contains two staves of music. The upper staff is in treble clef and the lower staff is in bass clef. The key signature has two sharps (F# and C#). The music begins with a treble clef and a key signature of two sharps. The first measure has a dynamic marking of *f*. The second measure has a dynamic marking of *mp*. The music consists of eighth and sixteenth notes with various articulations like slurs and accents.

f

SOLI

Detailed description: This system continues the musical piece. It features two staves. The upper staff has a dynamic marking of *f*. The word "SOLI" is written above the staff. The music includes slurs, accents, and a fermata at the end of the system.

Detailed description: This system shows more complex rhythmic patterns with slurs and accents. The music is written on two staves, with the upper staff in treble clef and the lower staff in bass clef. There are triplets and sixteenth notes throughout.

1

2

B

Detailed description: This system includes first and second endings. The first ending is marked with a "1" and a repeat sign. The second ending is marked with a "2" and leads to a section marked "B". The music is written on a single staff.

Detailed description: This system features a triplet of eighth notes. The music is written on a single staff and includes various note values and slurs.

SOLI

Detailed description: This system includes a "SOLI" marking. The music is written on a single staff and features slurs, accents, and dynamic changes.

ff

Detailed description: This system concludes the piece. It features a fermata and a dynamic marking of *ff*. The music is written on a single staff and includes slurs and accents.

PENNIES FROM HEAVEN

Orch. by
HARRY NEW

1st B \flat TRUMPET

by JOHN BURKE &
ARTHUR JOHNSTON

Moderato

mf

VOCAL CHORUS

p

MUTE

mp

mf

OPEN SOLI

mf

mf

SOLI

f

ff

f

ff

PENNIES FROM HEAVEN

Orch. by
HARRY NEW

2nd B \flat TRUMPET

by JOHN BURKE &
ARTHUR JOHNSTON

Moderato

mf

1

VOCAL CHORUS

mf

MUTE

mp

A

OPEN SOLI

mf

SOLI

f

3 3

1 2

f

B

ff

2

ff

PENNIES FROM HEAVEN

Orch. by
HARRY NEW

3rd B \flat TRUMPET

by JOHN BURKE &
ARTHUR JOHNSTON

Moderato

mf

1

VOCAL CHORUS

mf

MUTE

mp

A

OPEN SOLI

mf

SOLI

f

1 2

f

B

ff

PENNIES FROM HEAVEN

Orch. by
HARRY NEW

by JOHN BURKE &
ARTHUR JOHNSTON

2nd SAX B \flat TENOR

Moderato

Musical notation for the 2nd Saxophone B-flat Tenor part, starting with a *Moderato* tempo marking and a mezzo-forte (*mf*) dynamic.

VOCAL CHORUS

Musical notation for the Vocal Chorus, featuring a mezzo-piano (*mp*) dynamic and a **SOLI** marking.

Musical notation for the Vocal Chorus, featuring a mezzo-forte (*mf*) dynamic and a **SOLI** marking.

Musical notation for the Vocal Chorus, featuring a forte (*f*) dynamic and a **SOLI** marking.

Musical notation for the Vocal Chorus, featuring a forte (*f*) dynamic and a **SOLI** marking.

Musical notation for the Vocal Chorus, featuring a forte (*f*) dynamic and a **SOLI** marking.

Musical notation for the Vocal Chorus, featuring a forte (*f*) dynamic and a **SOLI** marking.

Musical notation for the Vocal Chorus, featuring a fortissimo (*ff*) dynamic and a **SOLI** marking.

PENNIES FROM HEAVEN

Orch. by
HARRY NEW

by JOHN BURKE &
ARTHUR JOHNSTON

2nd SAX B \flat TENOR

Moderato

mf

VOCAL CHORUS

mp
SOLI
mf

A SOLI
f
mp

SOLI
f

1 2 B

SOLI

ff

PENNIES FROM HEAVEN

Orch. by
HARRY NEW

by JOHN BURKE &
ARTHUR JOHNSTON

3rd SAX Eb ALTO

Moderato

Musical notation for the 3rd Sax Eb Alto part, starting with a *Moderato* tempo and *mf* dynamic. The key signature has two sharps (F# and C#), and the time signature is 4/4. The melody consists of eighth and quarter notes with various articulations.

VOCAL CHORUS

Musical notation for the Vocal Chorus, starting with a *mp* dynamic and a *SOLI* marking. The notation includes a piano accompaniment with a *mf* dynamic.

Continuation of the Vocal Chorus musical notation, featuring piano accompaniment and vocal lines.

Musical notation for the Vocal Chorus, marked *A SOLI* and *f* dynamic. The piano accompaniment is marked *mp*.

Musical notation for the Vocal Chorus, marked *SOLI* and *f* dynamic. The piano accompaniment features triplets.

Musical notation for the Vocal Chorus, marked *1*, *2*, and *B*. The piano accompaniment features triplets.

Musical notation for the Vocal Chorus, marked *SOLI* and *3* (triplets). The piano accompaniment features triplets.

Musical notation for the Vocal Chorus, marked *3* (triplets) and *ff* dynamic. The piano accompaniment features triplets.

PENNIES FROM HEAVEN

Orch. by
HARRY NEW

by JOHN BURKE &
ARTHUR JOHNSTON

4th SAX B \flat TENOR

Moderato

VOCAL CHORUS

PENNIES FROM HEAVEN

Orch. by
HARRY NEW

by JOHN BURKE &
ARTHUR JOHNSTON

5th SAX E \flat BARITONE

Moderato

mf

VOCAL CHORUS

mp SOLI

A SOLI

f

mp

B 8 SOLI

f

ff

PENNIES FROM HEAVEN

Orch. by
HARRY NEW

by JOHN BURKE &
ARTHUR JOHNSTON

1st TROMBONE

Moderato

mf

VOCAL CHORUS

MUTE

mp

OPEN

mf

SOLI

f

1 2

f

B

ff

PENNIES FROM HEAVEN

Orch. by
HARRY NEW

by JOHN BURKE &
ARTHUR JOHNSTON

2nd TROMBONE

Moderato

VOCAL CHORUS

PENNIES FROM HEAVEN

Orch. by
HARRY NEW

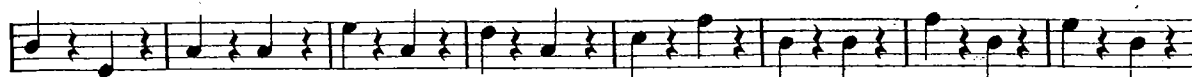
by JOHN BURKE &
ARTHUR JOHNSTON

BASS

Moderato



VOCAL CHORUS



PENNIES FROM HEAVEN

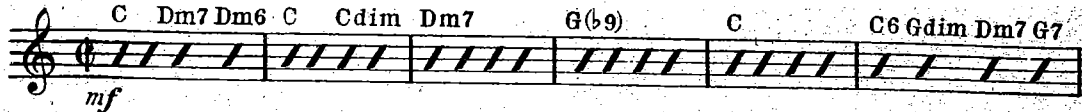
Orch. by
HARRY NEW

by JOHN BURKE &
ARTHUR JOHNSTON

GUITAR

Moderato

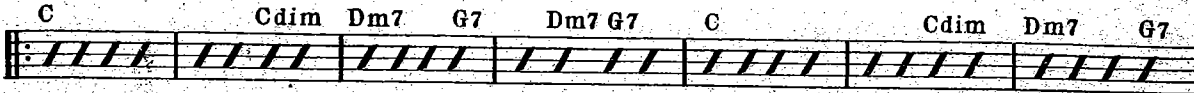
C Dm7 Dm6 C Cdim Dm7 G(b9) C C6 Gdim Dm7 G7



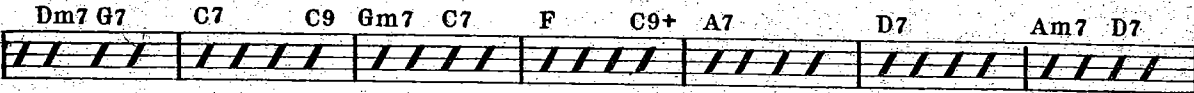
mf

VOCAL CHORUS

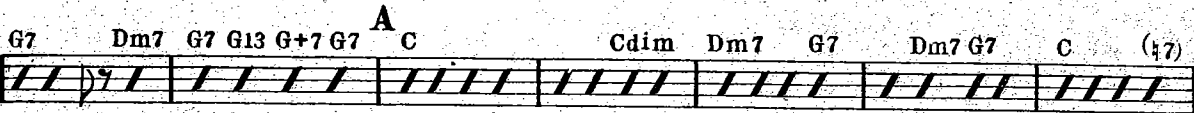
C Cdim Dm7 G7 Dm7 G7 C Cdim Dm7 G7



Dm7 G7 C7 C9 Gm7 C7 F C9+ A7 D7 Am7 D7



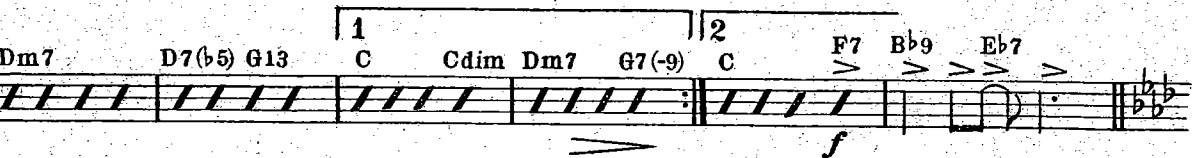
G7 Dm7 G7 G13 G+7 G7 ^AC Cdim Dm7 G7 Dm7 G7 C (47)



C9 C7+ F Dm7 F(47) Fm Fm7 C(47) C9 B9 Bb9 A9 A7

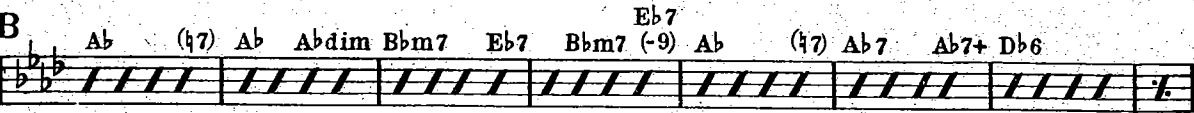


Dm7 D7(b5) G13 ¹C Cdim Dm7 G7(-9) ²C F7 Bb9 Eb7



f

^BAb (47) Ab Abdim Bbm7 Eb7 Bbm7 (-9) Ab (47) Ab7 Ab7+ Db6



Bbm7 Db Dbm Dbm7 Cm7 Ab9 G9 Gb9 F9 F7 Bbm7 Bbm7 Eb7(-9) Ab6 ^{A9}Ab9



ff

PENNIES FROM HEAVEN

Orch. by
HARRY NEW

DRUMS

by JOHN BURKE &
ARTHUR JOHNSTON

Moderato

mf

VOCAL CHORUS